



# Epic-Cure Inc. 2020 Annual Report

At Epic-Cure, our mission is to eliminate hunger and food waste, protect the environment by keeping food out of landfills, and to teach self-reliance through cooking classes for veterans and Title-1 school children. We leverage senior citizens to teach children to safely prepare meals, providing them with practical life skills and the self-confidence that comes from real achievement, while simultaneously connecting generations through a shared purpose and improving the well being of both the children and their senior citizen mentors.



# 2020 Letter from the Founders

5 January 2021

**How to describe 2020...** We think it boils down to 2 things for Epic-Cure.

- Say **YES** to everything.
- *Adapt and overcome.*

Back in January and February, with only our one refrigerated van, we were doing 3 weekly distributions with a 4th one twice a month. We were processing about 70,000 pounds a month. We had been in a state of constant growth since May of 2019, and we told ourselves that we would take a breather and just manage what we had going for a while. Every time we said that, a new opportunity arose giving us the resources to help more people - a new retail store assignment, a new wholesale distributor to pick up from, a farm with excess crops, USDA, a donated walk-in refrigerator, etc., and we always said **YES**.

Then COVID-19 hit, and, collectively, we knew we had to step up and do everything we could to help our family, friends, neighbors, and community members survive this disaster and the resultant government mandated economic shutdowns.

Shifting into high gear, we adapted and overcame!

# 2020 Letter from the Founders

We increased from 70,994 pounds of food distributed in February (pre-crisis) to 334,007 pounds of food distributed in July and did so under constantly changing conditions. We went from warehouse and farmer's market shopping to prepacked hand out and drive through distributions to meet CDC guidelines. Then, as Florida relaxed guidelines, we modified some distributions back to shopping.

During this time, we said **YES** to everything and actively sought every resource we could find. One week, that was an entire semitruck load of lettuces - about 8,000 pounds of them. We gave lettuce away nonstop for 3 days, calling every food service agency in town and calling every friend and neighbor we knew to help get it distributed. In the end, only a few hundred pounds of lettuce had to be sent to the farm - food for livestock. We are, after all, a moving company, not a storage company!

By the end of July, we were up to 12 weekly distributions and had secured our warehouse to expand operations in Putnam County. We were serving 4,000 families a month.

In St. Augustine, grant money enabled us to rent a refrigerated box truck and install a walk-in refrigerator. We had enough donations to add another electrical panel to manage our increasing power needs. We kept looking forward, focusing on how we could do more with those added resources. All the while, the volunteers kept showing up making it all happen!

Because of our volunteers' hard work, we rounded out the year providing 397,805 pounds of food to 6,694 families in December. We now average 17 weekly distributions and are adding an 18th weekly distribution this week, as we have added a new retail store to our food rescue operations.



# 2020 Letter from the Founders

Here are some 2020 year-end statistics. Saying **YES** to everything forced team Epic-Cure to *adapt and overcome*. It also did some real good in our community.

- 3.2 million pounds of food rescued & distributed.
- 48,111 families served.
- 148,268 individuals served.
  - ✓ 48,108 children served.
  - ✓ 37,758 seniors (60+) served.
  - ✓ 23,037 individuals with disabilities served.
  - ✓ 8,166 veterans and active military personnel served.
- 21,678 meals delivered to seniors and veterans.
- 12,213 Title 1 School food deliveries made.

All of this Good Food for Good People was delivered by our selfless volunteers who logged more than 21,000 volunteer-hours!

# 2020 Letter from the Founders

We have nourished many people, reducing food insecurity locally; however, that is not the only good we have done.

We have also nourished our planet. Keeping food out of land fills (food is by far the largest component in land fills in the U.S.), Epic-Cure has reduced environmentally harmful methane gas emissions. Methane gas is 10x more harmful to earth's atmosphere than are excess CO<sub>2</sub> emissions. In 2020, the 1,607 tons of food that, by the good work of our volunteers, did NOT find its way into land fills effectively:

- Removed approximately 3,700 cars from the road.



# 2020 Letter from the Founders

## A look ahead to 2021...

In the 1st quarter, Epic-Cure will have significant increases in infrastructure and capacity.

- A walk-in freezer will be installed in the St. Augustine warehouse.
- A large freezer container unit will be installed at the Palatka warehouse.
- We will have both a forklift and power pallet jack in Palatka.
- We will have both (a) volunteer sign in/hour tracking and (b) patron tracking automated and will invest in the electronics (iPads, computers, and software engineers) to accomplish that.
- Metric tracking will be improved, and report generation will be automated.
  - ✓ There are several key metrics we are targeting to help us discover underserved areas.

Having the additional freezer storage will free our refrigerated truck to be used to access more food sources as we ramp up to do more in Putnam and surrounding counties.

By the 2nd quarter we will have our inventory program launched by the UNF Senior Programming class so we can increase our support of other food service agencies in all surrounding counties.

*Epic-Cure's goal in 2021  
To increase our food  
throughput from **400,000 lbs.**  
to **4,000,000 lbs. monthly***

# 2020 Letter from the Founders

We the Founders of Epic-Cure are humbled and awed by all the good that our loyal army of volunteers has accomplished in 2020. So much Good Food for so many Good People! And ... we look forward to continuing this good work, shoulder to shoulder with these giant-hearted and tireless people in 2021 and beyond!



- ▶ Sunny Mulford
- ▶ Executive Director & Volunteer
- ▶ Saint Augustine Beach, Florida



- ▶ Hanna Layton
- ▶ Director & Volunteer
- ▶ Phoenix, Arizona



- ▶ Ken Mulford, CFA
- ▶ Managing Director & Volunteer
- ▶ Saint Augustine Beach, Florida



# Epic-Cure Inc.

## What We Do and How We Performed in 2020

# The Problem

## Food Insecurity

1 in 6 people in America face hunger

- Children: more than 1 in 5
- Blacks and Latinos: 1 in 3

Food wasted in the US every year could feed 25 million Americans

- Assuming the low end of the USDA-estimated food waste in the US

Feeding Northeast Florida estimates that 330,000 people in our service area are food insecure

- More than 100,000 have never accessed food assistance before the pandemic related economic lockdown

## Food Waste

The USDA estimates that between 30% and 40% of all food produced in the U.S. is wasted

Feeding America collected 3.6 billion of 72 billion pounds of food wasted in the US in 2019

- 68.4 billion pounds of food: **WASTED!**
- We have a long way to go.

## Greenhouse Gases

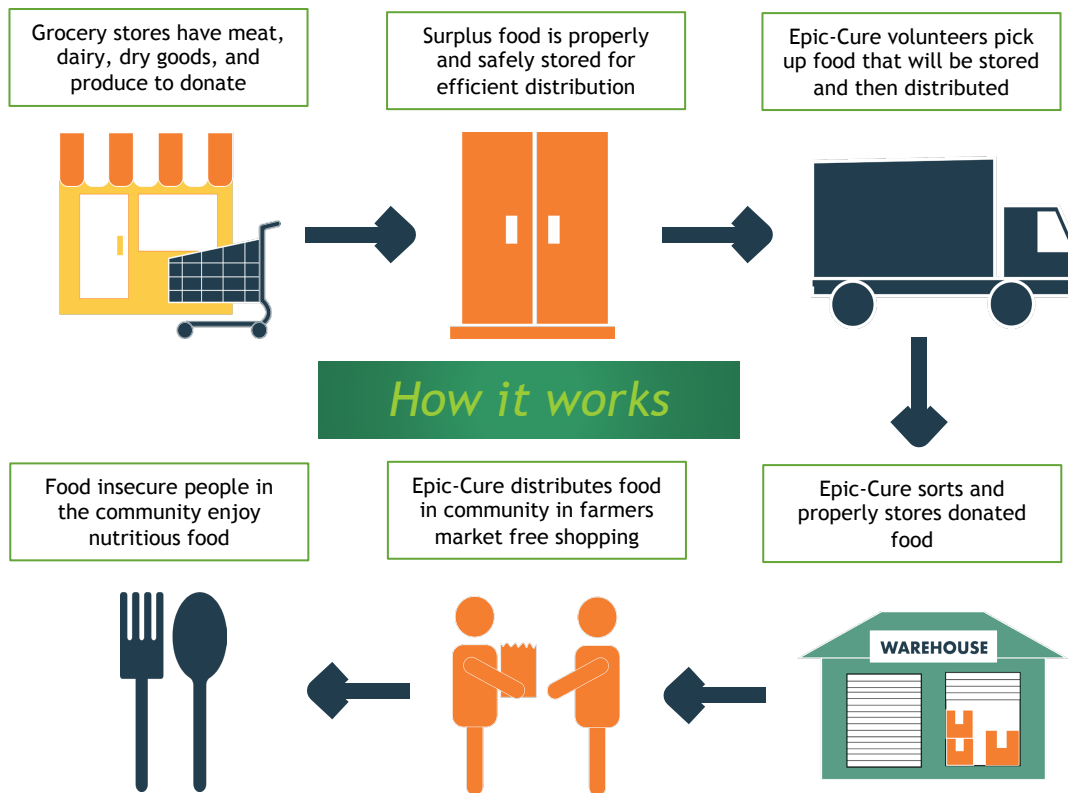
The wasted food ends up in landfills where it decomposes, without the aid of oxygen, and emits biogas - primarily methane gas

- Methane gas is more than 100x more potent at trapping energy than carbon dioxide (CO<sub>2</sub>), the principal contributor to man-made climate change

*(Environmental Defense Fund)*



# But Food is Available And Epic-Cure is Making a Difference



[www.Epic-Cure.org](http://www.Epic-Cure.org)

## Ending Food Insecurity & Waste Creating a Sustainable Environment

Epic-Cure Inc. *501(c)(3) non-profit organization*

Staffed **100% by VOLUNTEERS** taking urgent, immediate, and continuous action to make a measurable difference in eliminating food waste and feeding the food insecure

In 2020:

- ✓ 3.2 Million lbs. of food rescued & distributed (1,607 tons)
- ✓ 48,352 families served
- ✓ 1,607 tons of food translates to 1,414 metric tons of avoided CO<sub>2</sub> emissions
  - ❖ This is equivalent to 3,663 cars off the road (EPA WARM model estimates)

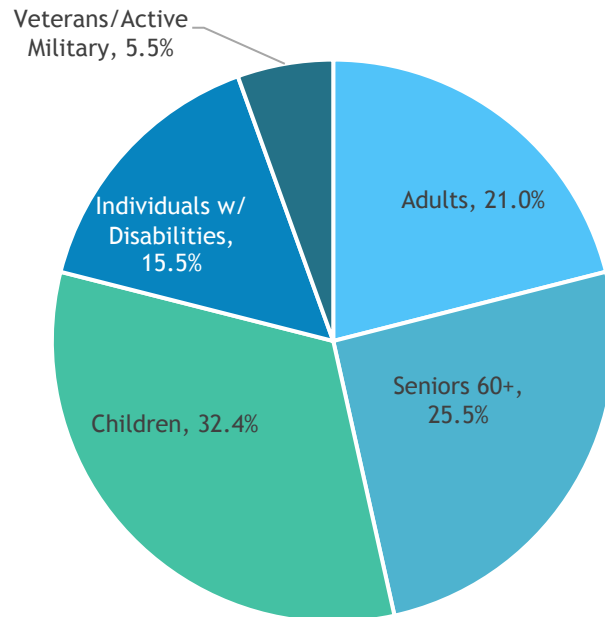


Text to Give: (904) 293-1095

# A Problem Made Worse: COVID-19

Food Insecurity: Up from 1 in 6 families to 1 in 4

The Good People Epic-Cure Served in 2020



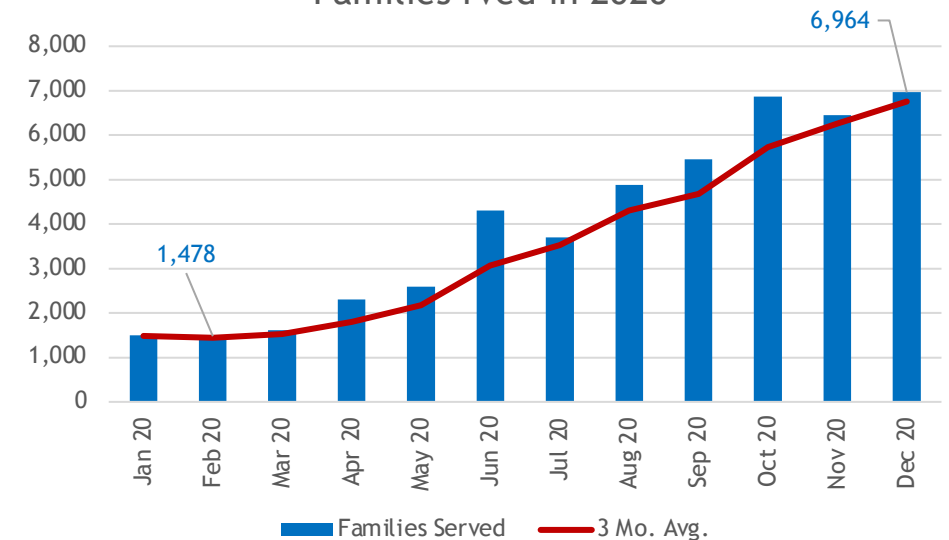
[www.Epic-Cure.org](http://www.Epic-Cure.org)

- ✓ By design, Epic-Cure does not require those served to provide identification
- ✓ Nor do we record information about race, gender, marital status, etc.
- ✓ Religious and political activities are prohibited at Epic-Cure
- ✓ Instead, we foster a community of peace and respect.
- ✓ We actively preserve the dignity of all patrons and volunteers



5,486 More Families per month since February

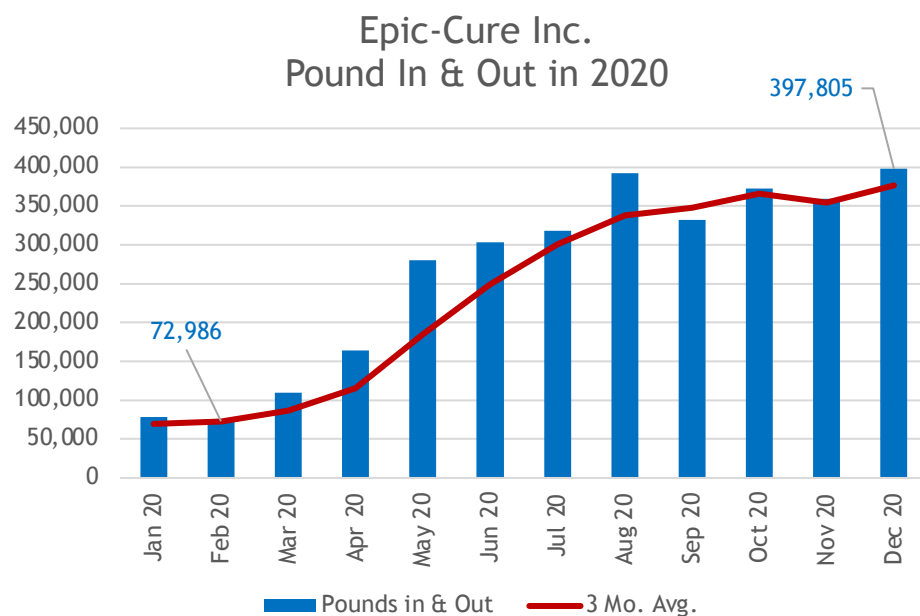
Epic-Cure Inc.  
Families served in 2020



Text to Give: (904) 293-1095

# Epic-Cure Volunteers: On the Frontlines, Battling Food Insecurity

Rescuing & Distributing 324,819 lbs. more monthly



[www.Epic-Cure.org](http://www.Epic-Cure.org)

Volunteers have moved this mountain of food

Volunteer Hours by County and by Month in 2020

Month	Total	Putnam	St. Johns
February	771		771
March	1,076		1,076
April	1,667		1,667
May	1,735		1,735
June	1,752		1,752
July	1,834		1,834
August	2,281	331	1,950
September	2,091	488	1,603
October	2,587	857	1,730
November	2,600	869	1,731
December	2,882	1,037	1,845
<b>Total</b>	<b>21,276</b>	<b>3,582</b>	<b>17,694</b>



Text to Give: (904) 293-1095



# And Nourishing the Planet

In 2020, Epic-Cure has been able to rescue and distribute 3.2 million pounds of food (1,607 tons)

Volunteer efforts go much farther than they know

Not only are our volunteers helping people in need, but they are also helping to improve the environment

Keeping the equivalent of 3,662 cars off the road

## EPA WARM Model Estimate of Carbon Footprint

Material:	Food Scraps/Organics
Tons of CO <sub>2</sub> saved per ton of Food Scraps and Organics Recycled and Composted	0.88
Tons of Food Scraps/Organics Recycled or Composted:	1,607
Metric Tons of avoided CO <sub>2</sub> Emissions	1,414
Equivalent Number of Cars Taken Off of the Road	3,663



# Where Does Epic-Cure Get its Funds?

## Grants & Donations & VOLUNTEERS!

- **VOLUNTEERS: > 21,000 in 2020**
- Putnam County CARES Act
- Ken and Sunny Mulford
- Beck-Sloan Properties
- Mr. Greg Boester
- Mr. Christopher Meloni
- The Community Foundation for Northeast Florida
- Employees of The Community Foundation for Northeast Florida
- The Church of Jesus Christ of the Latter-Day Saints
- The Rotary Club and Rotary International
- United Way
- Whole Foods
- Leonardi's Nursery
- Clay Electric Foundation
- Feeding Northeast Florida
- First Coast Emergency Relief
- Cool Jax Transport
- Chubb Group
- Employees of Chubb
- Housing Authority of Palatka
- Sunbelt Rentals
- Waste Pro
- Coomes Oil & Supply
- Florida Association for Food
- Burkhardt Distributing Co.
- Putnam County CARES Act
- Mr. Eric Kandell
- Anonymous



# How You Can Help Us To Help Others

## Capital Needs

➤ Refrigerated Box Truck	\$ 75,000
➤ 8 iPads *	<u>\$ 6,000</u>
➤ Total	<u>\$ 81,000</u>

\* Includes cover, Apple Care insurance, Apple Pencil (COVID-19 precaution)

## Operational Needs

➤ Operational Overhead	\$18,350/mo.
➤ Executive Director **	\$ 7,000/mo.
➤ Cooking Classes - Sustain U.	
✓ 5 Star Veterans Center	\$ 500/mo.
✓ Title 1 School Children	\$ 1,000/mo.
➤ Feed 64 Families for 1 Month	\$ 200/mo.
✓ Provides <u>57</u> pounds of food per family	

\*\* Executive Director is currently an *unpaid* volunteer position requiring 60+ hours, weekly, and is not included in the Operational Overhead number, above





# The Cost to Operate Epic-Cure

Full Year 2021 Operations

**\$220,200**

With Full Time Executive Director

**\$304,200**

